

FOR SALE



\$540,000

CONTACT Jessica Cleall - 0403 557 137
jessica@clydepoulton.com.au
Karl Poulton - 0401 824 335
karl@clydepoulton.com.au

OFFICE Nowra - 02 4421 2644

ADDRESS 68 Bridge Rd, Nowra

WEBSITE clydepoulton.com.au/1034420



South Nowra

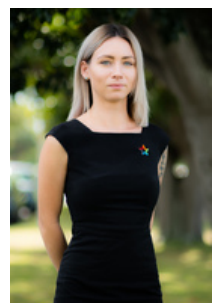
Looking for a secure investment?

Then you must consider this near new 4-bedroom home in The Twin Waters Estate. Nestled in a nice wide street you will find a home that has not only large open plan living and dining areas flowing from the kitchen but also well sized bedrooms that all boast built in wardrobes with the main offering the luxury of a walk-in robe. Modern main bathroom, and an ensuite off the master bedroom, a double lock up, all of this positioned on a 670m2 block. Opportunities like this a rare so call today to arrange your inspection. The property is currently leased at \$460 per week.

Lease end date: 21/06/2024

Option Available: 1 x up to 36 months

Right to Vary Available: 1 x up to 12 months Reduction and 1 x up to 12 months Extension (both the Option and RTV are exercised at DHA's



Jessica Cleall

Karl Poulton



Professionals

Clyde Poulton Real Estate

All information contained herein is gathered from sources we believe to be reliable. We cannot however guarantee its accuracy and interested parties should make and rely on their own enquiries. Print & marketing powered by iDashboard.com.au

10042691